

# Tractor

## Tractor Stools

2000

Stools



Since debuting at the Milan furniture fair in 2003, the BassamFellows Tractor Stool has become a bona fide modern icon. From the outset, it has proven to be a piece of infinite variety and its versatility is evident in the sheer number of spaces in which it appears. It's the rare piece of contemporary furniture – equal parts purpose and presentation – that exudes timelessness and ineffable contemporary cool. The dynamic form of the object – a kind of luxurious reimagining of the prosaic workman's footstool – evokes a warm, organic feel that symbolizes nature and invites interaction. The stool's shape is directly influenced by the precise ergonomics of a Swiss tractor seat. Carved from a piece of sustainably harvested solid wood using CNC technology, the stools are then hand-finished by expert cabinetmakers. The stool is elegant yet informal, and supremely comfortable.

### CB-21 Tractor Stool

W 17 1/4", 43.7 cm  
D 13 3/4", 35 cm  
H 19 1/4", 48.9 cm  
SH 17", 43 cm

### CB-22 Tractor Counter Stool

W 17 1/4", 43.7 cm  
D 13 3/4", 35 cm  
H 27 1/8", 68.8 cm  
SH 24 7/8", 63 cm

### CB-23 Tractor Bar Stool

W 17 1/4", 43.7 cm  
D 13 3/4", 35 cm  
H 32 5/8", 82.9 cm  
SH 30 3/8", 77.1 cm

**Wood:**  
Solid Ash  
Solid Oak  
Solid Walnut

**Finish:**  
Ebonized black lacquer on Ash or bleached, white pigment, matte acrylic on Ash. Raw effect lacquer on Oak. Hand rubbed natural oil on Oak or Walnut, or hand rubbed black oil on Walnut.

**Footrest:**  
Leather wrapped footrest. Contract version available with Wenge footrest.

Made in Italy

Custom heights available  
Cannot add back stretcher

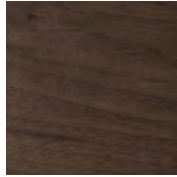
# Wood

BassamFellows  
Wood

Wood



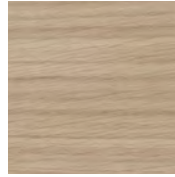
Walnut  
W-NA



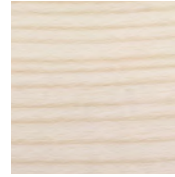
Walnut Black Oil  
W-BO



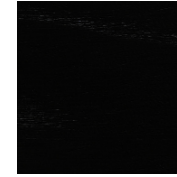
Oak  
O-NA



Oak Raw Effect  
O-RE



White Ash  
A-BL



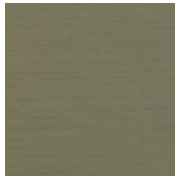
Ebonized Ash  
A-EB



Teak  
T-NA



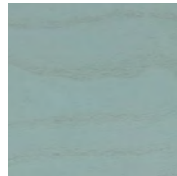
Iroko  
I-NA



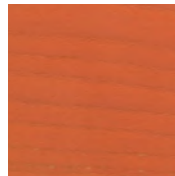
Sage Green Ash  
A-SG



Sun Yellow Ash  
A-SY



Horizon Blue Ash  
A-HB



Mesa Red Ash  
A-MR