

**Pebble**  
Pebble Lounge Armchair

2017

Lounge Chairs



The BassamFellows Pebble Collection was inspired by a single simple pebble. Architect, Craig Bassam found himself returning again and again to a small, pleasingly shaped pebble he had picked up while walking on the beach on Cape Cod. It had been sitting on his desk for some time and served as a kind of organic stress ball – something tactile and pleasing to turn around in his hand, but also to inspire visually, like a kind of incidental, miniature Henry Moore. The Pebble Lounge Armchair, which harks back to the object that still sits on Craig Bassam’s desk, is an ample, fully carved wood chair – both highly tactile and grounding.

**CB-630**  
**Pebble Lounge Armchair**

W 29", 73.7 cm  
D 24 1/4", 61.5 cm  
H 27 1/2", 69.8 cm  
SH 15 1/2", 39.2 cm  
AH 23 1/2", 59.7 cm

*Wood:*  
Solid Oak  
Solid Walnut

*Finish:*  
Ebonized black lacquer on  
Oak. Raw effect lacquer on  
Oak. Hand rubbed natural oil  
on Oak or Walnut, or hand  
rubbed black oil on Walnut.

Made in Italy

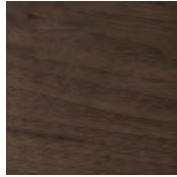
# Wood

BassamFellows  
Wood

Wood



Walnut  
W-NA



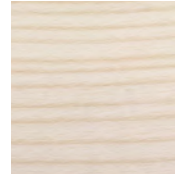
Walnut Black Oil  
W-BO



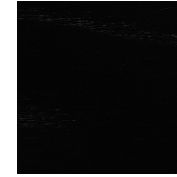
Oak  
O-NA



Oak Raw Effect  
O-RE



White Ash  
A-BL



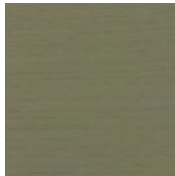
Ebonized Ash  
A-EB



Teak  
T-NA



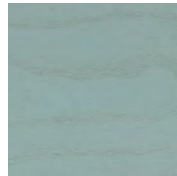
Iroko  
I-NA



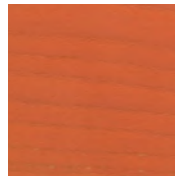
Sage Green Ash  
A-SG



Sun Yellow Ash  
A-SY



Horizon Blue Ash  
A-HB



Mesa Red Ash  
A-MR