

Mantis

Mantis Lounge Chair

2014

Lounge Chairs



Inspired by the noble praying mantis, the signature stance and powerful limbs of this chair offers a study in contrasts. Strong and elegant, sharp and curved, thick and thin — the Mantis is sturdy and solid, yet visually light. Designer Craig Bassam conceived the chair to be a new American classic, an object that possessed measurable gravitas and wasn't overly indebted to the classic dining chairs associated with mid-century Europe. From certain angles, the Mantis Lounge Chair feels almost like a piece of sculpture. Carved entirely from solid wood, it is a new alternative to the classic and indestructible courthouse chair. Unlike many of its predecessors, however, comfort is at the forefront, with a commodious, ergonomically shaped seat. A hand-stitched leather cushion can be added to amplify both comfort and luxury.

CB-250 Mantis Lounge Chair

W 27 1/2", 69.8 cm
D 23 5/8", 60.2 cm
H 27 3/8", 69.6 cm
SH 14 7/8", 37.8 cm
AH 23 1/8", 58.6 cm

Wood:
Solid Ash
Solid Oak
Solid Walnut

Finish:
Ebonized black lacquer
on Ash or bleached, white
pigment, matte acrylic
on Ash. Raw effect lacquer
on Oak. Hand rubbed
natural oil on Oak or Walnut,
or hand rubbed black oil
on Walnut.

Made in Italy

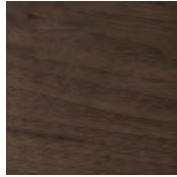
Wood

BassamFellows
Wood

Wood



Walnut
W-NA



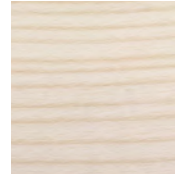
Walnut Black Oil
W-BO



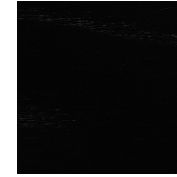
Oak
O-NA



Oak Raw Effect
O-RE



White Ash
A-BL



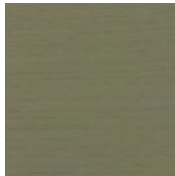
Ebonized Ash
A-EB



Teak
T-NA



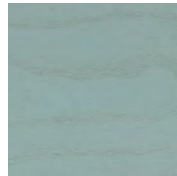
Iroko
I-NA



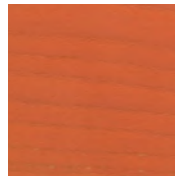
Sage Green Ash
A-SG



Sun Yellow Ash
A-SY



Horizon Blue Ash
A-HB



Mesa Red Ash
A-MR

Elegant

BassamFellows
Leather

Leather



95947 Oxblood



11038 Platinum
Gray



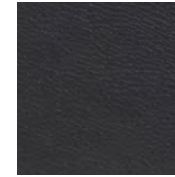
43024 Camel



43807 British Tan



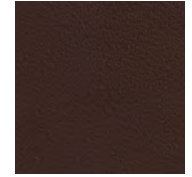
48027 Olive



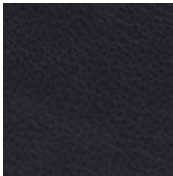
91059 Anthracite



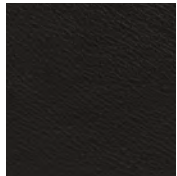
93718 Dark Cognac



93957 Dark Brown



97026 Dark Navy



99001 Black

Elegant grain leather is aniline-dyed with a batique-effect that displays the natural character of the original Scandinavian cattle hide.

Additional colors available. Minimum and upcharge may apply.

Raw Material

Grain leather from
Scandinavian cattle

Thickness

1.0 – 1.2mm

Finish

Pure aniline leather

Lightfastness

3

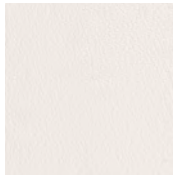
Price Grade

A

Coach

Leather

BassamFellows
Leather



00118 Milk



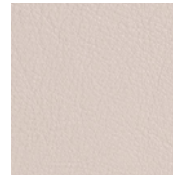
11073 Pale Gray



11049 Medium Gray



13048 Elephant



01061 Gray Beige



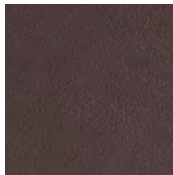
13072 Taupe



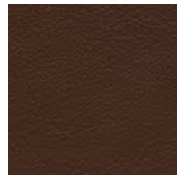
02119 Camel



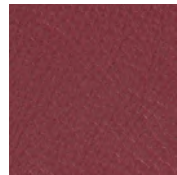
33004 British Tan



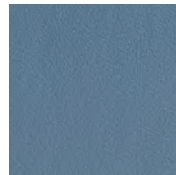
93129 Dark
Chocolate



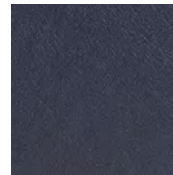
93109 Topaz Brown



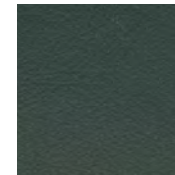
35126 Oxblood



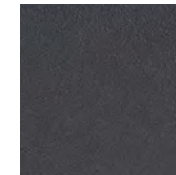
17027 Cadet Blue



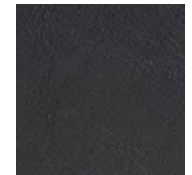
77127 Dark Navy



98015 Dark Green



91102 Anthracite



99999 Black

Coach is a chrome free, soft and pliable semi-aniline leather that offers outstanding comfort combined with excellent durability and is suitable for public environments.

Additional colors available. Minimum and upcharge may apply.

Raw Material

Grain leather from Scandinavian cattle

Thickness

1.1 - 1.3mm

Finish

Semi-Aniline leather

Lightfastness

6

Price Grade

A

Comfort

Leather

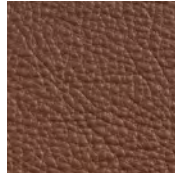
BassamFellows
Leather



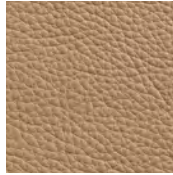
02067 Beige



12114 Gray Beige



33286 Chestnut
Brown



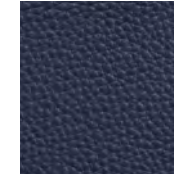
43632 Camel



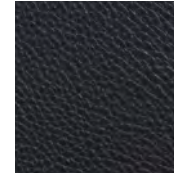
91089 Anthracite



93287 Chocolate



97054 Navy



99991 Black

Like the name suggests, Comfort is a soft aniline leather that showcases a varied grain and the distinct features of the natural hide.

Additional colors available. Minimum and upcharge may apply.

Raw Material

Grain leather from Scandinavian cattle

Thickness

1.3 - 1.5mm

Finish

Pure aniline leather

Lightfastness

3

Price Grade

B